

Flagstaff



MAC/LTD, CLASSIC AND HIGH WALL TENT CAMPERS

BY FOREST RIVER

MAC / LTD SERIES



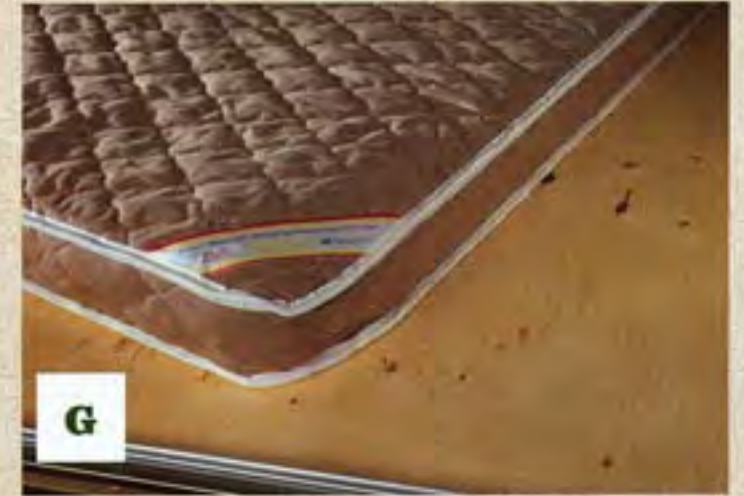
Flagstaff takes pride in packing the most value possible into our MAC / LTD series. While coming standard with many features, it also gives you the flexibility to incorporate as many options as you choose to fit your camping preferences. Make your investment go along way with the MAC / LTD camper.



FEATURES

- A. Exterior Electric Plug
(Except 176LTD)
- B. Metal Drawer Guides
- C. Under Floor 20 Gallon
Water Tank
(STD. Except LTD.)
- D. One-Piece Door
(STD. Except LTD.)
- E. Outside Grill with
Work Table
(STD. on all Except LTD)
- F. Spare Tire (STD. with
Travel Package)
- G. Marine Grade Plywood
Bed Ends
- H. Heated Mattress
(STD. OPT.)

Flagstaff Tent Campers brings the comforts of home on the road. From features like the heated mattresses, metal drawer guides and Fantastic Fan, you can be sure your quality-built Flagstaff camper will be very enjoyable year after year. Vacation is just around the corner.



Flagstaff's Classic series has much to offer the camping enthusiast. From the expansive sliding storage trunk for that extra packing space, to a bunk light and air circulating fan, the convenient hanging shirt bar to place your clothes, and standard hot water package with outside shower are some of the trademarks that make the Flagstaff Classic luxurious.



FEATURES

- A. Outside Shower (STD. on Classics and HW)
- B. Hanging Shirt Bar (STD. on Classics and HW)
- C. Outside Speaker (STD. Classic, HW)
- D. Porta-Potty (STD. in Selected Models)
- E. Bunk Light & Fan (STD. Classic, HW)
- F. Swing Down Galley (Most Models)
- G. Sliding Storage Trunk (Some Models)
- H. Crank Down Stabilizer Jack with Sand Pad
- I. Stereo with CD Player (STD. Classic, HW)

MODEL 625D // LIVING AREA

CLASSIC SERIES



The 625D Classic has many new features to enhance your camping experience. The swing-down galley and standard power lift make the Classic a breeze to set-up. The expansive seating throughout the camper gives everyone plenty of room to sit and enjoy themselves.

HIGH WALL SERIES



Cream colored cabinetry, stainless steel finishes and beautiful wood-look flooring puts this camper in a class of its own. The Flagstaff High Wall Campers are perfect for those families who want the luxurious features of a travel trailer in a much lighter towable option. It's your vacation. Go in style.



FEATURES

A. Beautiful hardwall shower with a residential-style flush toilet complete with a 12-gallon black water holding tank. (Std. 27SC, 29SC)

B. Fantastic Fan (Opt.)

C. Power Lift with Manual Override (Std. Classic, HW)

D. Water Filter (Std. w/

Right: No more waiting in line for the showers. Take a morning shower in privacy without leaving your camper while breakfast is started. Our high wall models include a three burner range, microwave, stereo, a larger kitchen sink and shower which brings the finer amenities to tent camping.



A



B



C



D



Flagstaff

Classic Series

670

Flagstaff

CONSTRUCTION FEATURES

- 1) Three Stage Double Arm Lifter Posts
- 2) Fiberglass Vacuum Bonded Radius Roof w/ No Center Seam
- 3) Five-Piece Tenting with Breathable Bed Ends
- 4) E-Z Crank Down Stabilizer Jacks w/ Sand Pads
- 5) Full Perimeter Aluminum Bed Frames
- 6) Plywood Bunk Ends
- 7) Seven-Way Pigtail Wiring
- 8) Under Floor 20 Gallon Fresh Water Tank (Ltds 10 Gallon Above Floor)
- 9) E-Coated Tubular Steel Frame
- 10) Powder Coated Rafter Poles and Bed Bows
- 11) Air Conditioner Reinforcing Laminated into Roof
- 12) 13" Radial Tires on 12' Models (12" Radial Tires on 8' & 10' Models)
- 13) Easy Lube Axles
- 14) Breathable Canvas Bed End Material
- 15) One-Piece Door (Except LTDs)

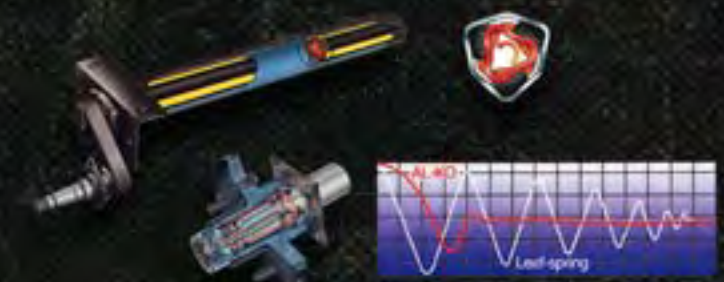
ALKO® AXLES AND EASY LUBE HUBS

AL-KO Axles offer many advantages over conventional axles:

- Fully independent wheel suspension.
- Lower trailer center of gravity for improved stability.
- No metal to metal contact and no springs, shackles, hangers, or U-bolts to break or wear out.

The UltraLube™ Hubs allow you to repack bearings quickly and easily without disassembly.

Note: Torsion Axles on Classics and HW only. Easy-Lube Hubs on all units except LTDs.





POPULAR TENT FEATURES

- A. Screen Room with Flaps (Opt.)
- B. Hanging Pantry (Opt.)
- C. Power Lift (Opt. on LTD., MAC)
- D. Hanging Wardrobe (Opt.)
- E. Bike Rack (Opt.)



HIGH WALL SERIES STANDARDS & OPTIONS

STANDARD FEATURES

- Double Pan Sink with High Rise Faucet
- 14" Tires with Aluminum Rims
- 3500 LBS Torsion Axles by AL-KO
- Easy-Lube Axles
- New Exterior Graphics
- Cream Interior with "Wood Look" Linoleum
- AM/FM Stereo with CD player
- TV Outlet with Cable and Satellite Hook Up
- Three Burner Stove with Oven
- Microwave
- Hot Water Package (Incl. Water Filter, Outside Shower, DSI Six Gallon Hot Water Heater, On-Demand Water Pump)
- Electric Water Pump
- Water Purifier
- Two-20 lb. Gas Bottles
- Diamond Plated Metal End Caps
- Stainless Steel Appliances
- Six Gallon Gray Water Holding Tank
- Bunk Light with Fan
- One-Piece Screen Door
- Electric Brakes
- Battery Box and Wiring Kit
- 12v Safety Switch
- Power Lift System
- Awning

OPTIONS

- 13,500 BTU Air Conditioner
- Create-a-Breeze Three Speed Fantastic Fan
- Heated Innerspring Mattresses
- 17,000 BTU Forced Air Furnace w/ Electric Ignition
- Screen Room with Flaps
- Convenience Package (Incl. Lined Privacy Curtain, Roof Valances, Patio Light, 110 Exterior Outlet)
- Travel Package (Incl. Spare Tire, Tire Bracket, Tire Cover, Step)
- Power Jack
- Tire Pressure Monitoring System
- Extra Large Three-Way 4.0 cu. ft. Refrigerator

MODEL	HW25SC	HW25ST	HW27SC	HW29SC
GVWR (Gross Vehicle Weight Rating)	3,868	3,797	3,743	4,728
Base/Dry Unit Weight	2,942	2,729	2,952	3,137
Base/Dry Hitch Weight	368	392	287	356
Base/Dry Axle Weight	2,479	2,330	2,665	2,719
Cargo Capacity	691	840	556	1,336
Box Size	12'	12'	14'	16'
Trailer size (Closed - w/ hitch)	18' 6"	18' 6"	19' 4"	21' 4"
Height (Closed)	68"	68"	68"	68"
Trailer Length (Open)	22' 6"	22' 6"	24' 9"	26' 9"
Interior Height	88"	88"	88"	88"
Travel Width	85"	85"	85"	85"



HW25S/C



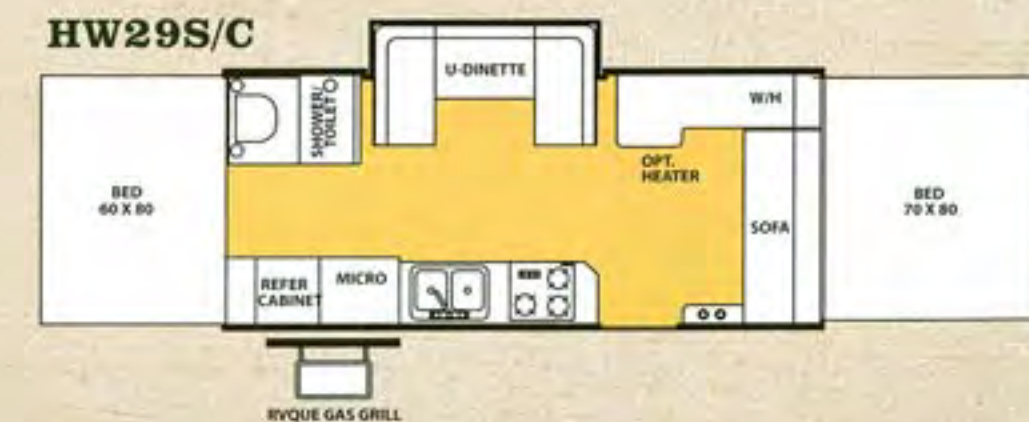
HW25ST



HW27S/C



HW29S/C



CLASSIC SERIES STANDARDS & OPTIONS

CLASSIC STANDARD FEATURES

- Power Lift System
- Swing Level Galley with Storage
- Residential Style Kitchen Faucet w/ Electric Water Pump
- Larger Deeper Sinks
- Soft Quilted Top Innerspring Mattresses
- Outdoor Gas Grill w/ Worktable
- Sliding Storage Tray on All Front Trunk Models (Except 620ST)
- Water-Pur Filtration System
- E-Z Crank-down Stabilizer Jacks w/ Sand Pads
- Electric Brakes (12' Models)
- Residential Style Raised Panel Doors
- Three Double Ceiling Lights w/ Jacks for Accessories
- Bunk Light w/ Fan
- Permanently Mounted Three-Burner Indoor Range w/ Stove Cover
- Free Standing Table — High Pressure Laminate
- Comfortable Family Style Dinette w/ 4" Reversible Cushions
- Large Clothes Bar
- LP Leak Detector
- Metal Drawer guides
- Port-a-Potty in 425D and 620 Models
- A&E Free Standing Awning

- Hot Water Pkg. — Incl. Water Filter, Outside Shower, Six Gallon Hot Water Heater, Demand Water Pump
- AM/FM Stereo w/CD Player
- Outside Speaker

CLASSIC CONSTRUCTION FEATURES

- Smooth Fiberglass Vacuum Bonded Exterior
- Three-Stage Double Arm Lifter Posts
- Fiberglass Vacuum Bonded Radius Roof w/ No Center Seam
- One-Piece Screen Door
- Five-Piece Sectionalized Vinolon Supreme Tenting with Breathable Bunk Ends
- Under Floor 20 Gallon Fresh Water Tank
- Powder Coated Tubular Steel Frame
- One Piece Undercoated Structure wood Floor
- 13" Radial Tires (12" Models)
- Seven-Way Pigtail Plug
- Tent Permanently Attached on Bunk Ends and Slide Out
- Full Perimeter Aluminum Bed Frames
- Tinted Vinyl Windows
- Powder Coated Rafter Poles and Bed Bows
- Steel Air Conditioner Vent Reinforcing Laminated Into Roof
- Easy Lube Axles
- Two Tone Fabric Interior

- Plywood Bunk Ends
- Independent Torsion Axles
- Lower Door Operational in Closed Position
- 2000 lb. Tongue Jack w/ Swivel Wheel
- Seamless, High Density Polyethylene Wells
- Battery Box and Wiring Kit
- 20lb. LP Bottle

CLASSIC POPULAR EXTRAS

- Create-A Breeze Three Speed Fantastic Fan
- Thermostatically Controlled Heated Mattresses
- 17,000 BTU Forced Air Furnace w/ Electric ignition
- Extra-Large 2.5 Cubic Ft. Refrigerator
- A&E Screen Room with Flaps
- Convenience Pkg. (Incl. Lined Privacy Curtains, Roof Valances, Patio Light, 110 Exterior Outlet)
- Travel Pkg. (Incl. Spare Tire, Tire Bracket, Tire Cover, Step)
- Overhead Kitchen Pantry
- Hanging Wardrobe
- Power Lift System
- Bike Rack
- Air Conditioning Wiring Kit
- Electric Brakes (10' models)
- 13" Radial Tires (10' models)
- Dual 20 lb. LP Bottles
- Power Jack
- Tire Pressure Monitoring System

FLAGSTAFF CLASSIC SERIES SPECIFICATIONS

MODEL	620ST	720	523	525D	625D	425D	823D	823
GVWR (Gross Vehicle Weight Rating)	2430	2423	3036	3024	3006	3026	3077	3038
Base/Dry Unit Weight	1865	1679	2297	2517	2502	2518	2484	2223
Base/Dry Hitch Weight	185	207	316	377	362	358	393	285
Base/Dry Axle Weight	1680	1475	1981	2140	2140	2174	2100	1938
Cargo Capacity	330	509	551	319	396	320	355	580
Box Size	10'	10'	12'	12'	12'	12'	12'	12'
Trailer Size (Closed - w/ Hitch)	15'5"	14'	17'11"	17'11"	17'11"	17'11"	17'11"	17'11"
Height (Closed)	57"	57"	61"	57"	61"	61"	61"	61"
Trailer Length (Open)	20'2"	20'2"	23'6"	23'6"	23'6"	23'6"	23'6"	23'6"
Interior Height	6'6"	6'6"	6'6"	6'6"	6'6"	6'6"	6'6"	6'6"
Travel Width	85"	85"	85"	85"	85"	85"	85"	85"
Tire Size - 13"R std.	12"	12"	STD.	STD.	STD.	STD.	STD.	STD.
Power Converter with Charger: Amps	25	25	25	25	25	25	25	25

Model number of any particular unit does not necessarily reflect the overall length of the unit itself. Dry weight are estimates.



MAC/LTD SERIES STANDARDS & OPTIONS

MAC/LTD STANDARD FEATURES

- Residential Kitchen Faucet w/ Electric Water Pump
- Soft Quilted-Top Bed Mattresses (4" High Density Foam)
- Outside Gas Grill (Optional on LTDs)
- Water-Pur Filtration System w/ all Shower Models
- Permanently Mounted 3 Burner Indoor Range w/ Range Cover (except LTDs)
- Converter w/ Built in Battery Charger
- Electric Brakes (12' models)
- Tinted Vinyl Windows
- Exterior Work Table (except LTDs)
- LP Leak Detector
- Automatic Safety Switch to Turn Off 12 Volt Current When Roof is Closed
- Large Built-In Icebox
- Drawer Guides
- One Piece Screen Door (Except LTDs)
- Port-a-Potty in 1910 Model
- A&E Awning
- Battery Box (Except LTDs)

MAC/LTD CONSTRUCTION FEATURES

- Three Stage Double Arm Lifter Posts
- Fiberglass Vacuum Bonded Radius Roof w/ No Center Seam
- Five-Piece Vinolon Supreme Tenting
- E-Z Crank Down Stabilizer Jacks w/ Sand Pads
- Full Perimeter Aluminum Bed Frames
- Plywood Bunk Ends
- Seven-Way Pigtail Wiring
- Under Floor 20 Gallon Fresh Water Tank (LTDs 10 Gallon above floor)
- Automotive E-Coated Tubular Steel Frame
- One-Piece Undercoated Structurewood Floor
- Electric Brakes (12' Models)
- Powder Coated Rafter Poles and Bed Bows
- Steel Air Conditioner Reinforcing Laminated into Roof
- 13" Radial Tires on 12' Models (12" Radial Tires on 8' & 10' Models)
- Leaf-Spring Axle
- Main Door Operational in Closed Position
- 2,000 lb. Tongue Jack w/ Swivel Wheel
- Easy Lube Axles (Except LTDs)
- Seamless, High Density Polyethylene Wheel Wells
- Battery Box and Wiring Kit
- Swing Level Galley with Storage

MAC POPULAR EXTRAS

- Create-A-Breeze Three Speed Fantastic Fan
- Thermostatically Controlled Heated Bed Mattresses
- 17,000 BTU Forced Air Furnace w/ Electric Ignition
- Large 1.9 Cubic Ft. Refrigerator
- Screen Room with Flaps
- Convenience Pkg. (Incl. Lined Privacy Curtains, Roof Valances, Patio Light, 110 Exterior Outlet)
- Travel Pkg. (Incl. Spare Tire, Tire Bracket, Tire Cover, Step)
- Shower/Cassette Option (Model 228 and 228D Incl. Water Filtration System, Six Gallon Hot Water Heater, Demand Water Pump, and Cassette Toilet)
- Overhead Kitchen Pantry
- Power Lift System *
- Bike Rack
- Air Conditioner Wiring Kit
- Electric Brakes (Standard on 12' Models)
- Dual 20 Lb. LP Bottles with Cover
- Tire Pressure Monitoring System

FLAGSTAFF MAC/LTD SERIES

MODEL	176ST	176ED	206ST	206BH	205	208	227	228	228BH	228D	BR19TH	BR23SC	BR28TSC	176LTD	206LTD
GVWR	2287	2381	2341	2383	2355	2427	2989	3051	3071	3000	3749	3770	7208	2344	2360
Unit Dry Weight	1574	1452	1818	1671	1635	1632	1894	1956	2102	2130	2327	2677	2913	1306	1457
Hitch Weight	187	202	250	277	240	264	269	310	317	295	357	307	208	184	248
Axle Weight	1387	1250	1568	1394	1380	1350	1540	1646	1785	1835	1970	2344	2765	1122	1209
Cargo Capacity	525	744	417	525	532	610	912	860	734	685	1193	884	3999	839	718
Box Size	8'	8'	10'	10'	10'	10'	12'	12'	12'	12'	10'	10'	10'	8'	10'
Trailer size (Closed - w/ hitch)	14'	12'	15'11"	17'2"	14'	14'	15'11"	15'11"	15'11"	15'11"	18'1"	22'1"	26'3"	12'	14'
Height (Closed)	57"	57"	57"	57"	57"	57"	57"	57"	57"	57"	62.5"	62.5"	62.5"	57"	57"
Trailer length (Open)	17'	17'	20'2"	20'3"	20'2"	20'2"	22'6"	22'6"	22'6"	22'6"	22'7"	25'6"	30'3"	17'	20'2"
Interior height	6'6"	6'6"	6'6"	6'6"	6'6"	6'6"	6'6"	6'6"	6'6"	6'6"	6'6"	6'6"	6'6"	6'6"	6'6"
Travel width	85"	85"	85"	85"	85"	85"	85"	85"	85"	85"	85"	85"	85"	85"	85"
Tire Size - 13"R std.	12"	12"	12"	std	12"	12"	std	std	std	std	15"	15"	15"	12"	12"
Power converter w/ charger: amps	25	25	25	25	25	25	25	25	25	25	25	25	25	12	12

LTD STANDARD FEATURES

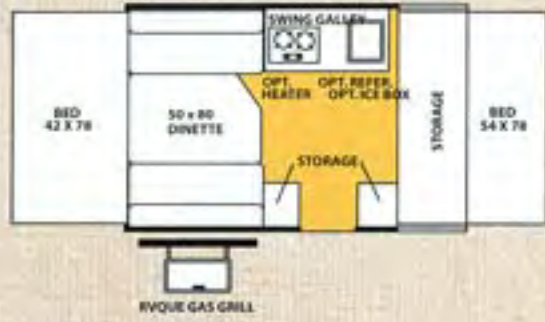
- Spare Tire
- Awning
- Roof Vent
- Privacy Curtains
- Rear Crank Down Stabilizer Jacks w/ Sand Pads
- Outside Recep. (206 LTD only)
- Patio Light (206 LTD only)
- Step

LTD POPULAR EXTRAS

- Thermostatically Controlled Heated Bed Mattresses
- Large 1.9 Cubic Ft. Refrigerator
- 17,000 BTU Forced Air Furnace w/ Electronic Ignition
- Add-A-Room with Flaps
- Electric Brakes
- Outside Gas Grill
- Battery Box
- Power Lift

MAC/LTD SERIES SERIES FLOORPLANS

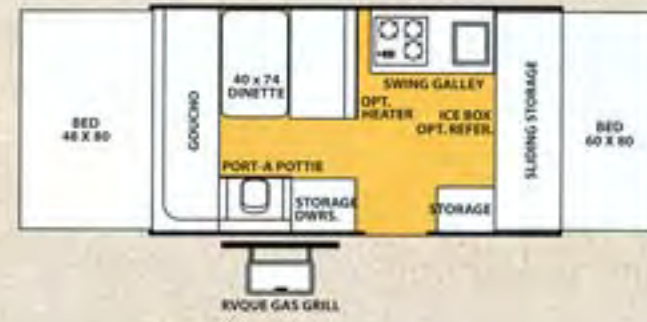
176ST



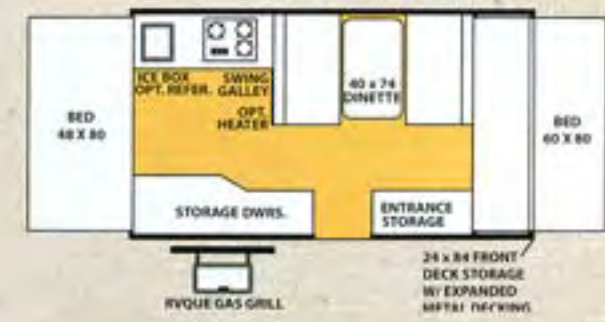
176ED



206ST



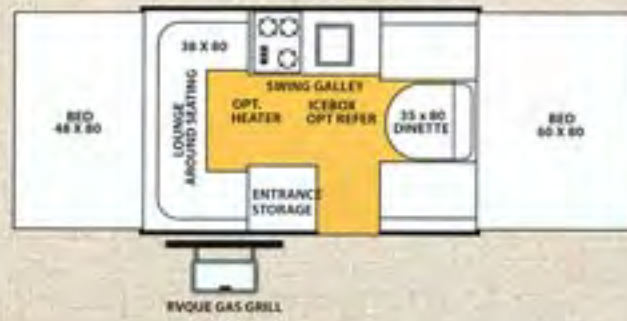
206BH



205



208



227



228



2280BH



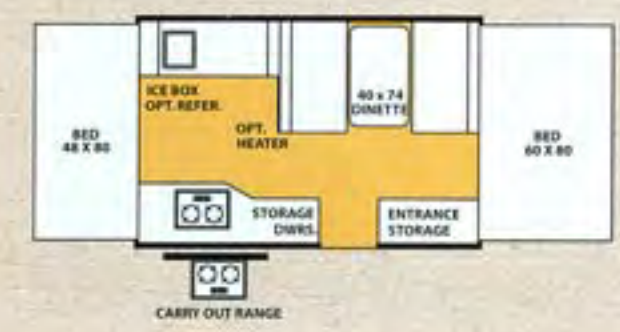
228D



176LTD



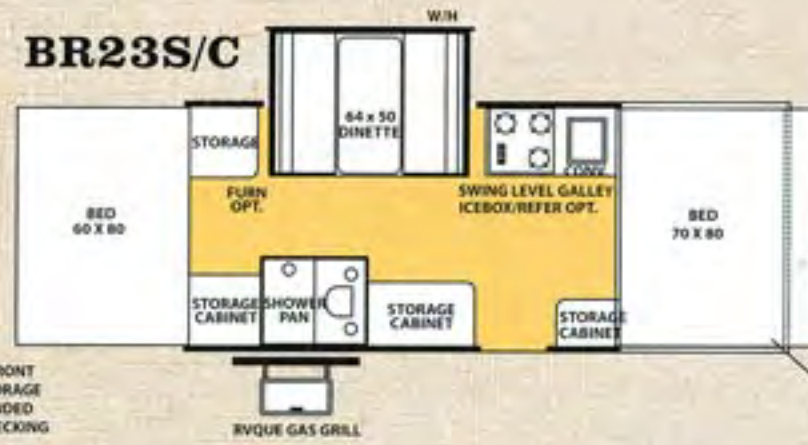
206LTD



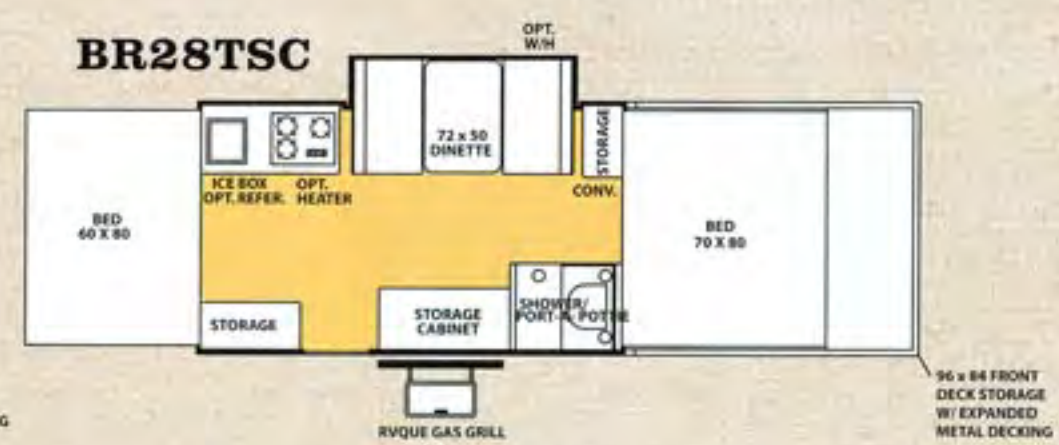
BR19TH



BR23S/C



BR28TSC



PEACE OF MIND.

Forest River has yet another exclusive feature to offer: One year of free roadside assistance will be given to every 2008 Flagstaff customer. This is just one more way to say "Thank you" and to ensure an enjoyable traveling experience.



FOREST RIVER'S HALLMARK OF EXCELLENCE:

PRE-DELIVERY INSPECTION FACILITIES



THAT'S 20,000 SQUARE FEET OF QUALITY ASSURANCE. THE BARE ESSENTIALS FOR A PREMIUM PRODUCT.

Brought online in 2005, Forest River is proud of its state-of-the-art test facility. This beautiful building blends many of the old tried and true methods of testing our diverse types of RVs with new innovative ways of solving quality issues. Being centrally located to most Forest River manufacturing facilities, this 20,000 square foot PDI (Pre-delivery Inspection) test building gives immediate daily feedback to individual managers. This assures the production facilities that nothing has slipped by the plant's quality assurance personnel and the units are "green" and ready to ship.

YOUR FLAGSTAFF DEALER

ROBERTS SALES
741 S. Federal Blvd.
Denver, Colo. 80219
303-922-6221
www.robertssales.com



For details on Flagstaff's complete warranty program, see your Flagstaff dealer. When it comes to backing products with the same quality and commitment it does when it begins the manufacturing process, the only name you have to remember when you're looking for a recreational vehicle is Flagstaff. Flagstaff offers the following additional limited warranties to the original purchasers. Consult written warranty for details.

1. Five-year roof warranty,
 2. Twenty-five-year floor warranty,
 3. Five-year frame warranty,
 4. Five-year tent warranty,
 5. Five-year warranty on torsion axle suspension,
 6. Limited life-time warranty of lifter system,
 7. One-year bumper to bumper.
- Ask your dealer about the available lifetime structural warranty.



All specifications contained herein are based on the latest product information at time of printing. Forest River reserves the right to make changes in colors, materials, equipment and specifications at any time without notice and assumes no responsibility for any errors in this brochure.