

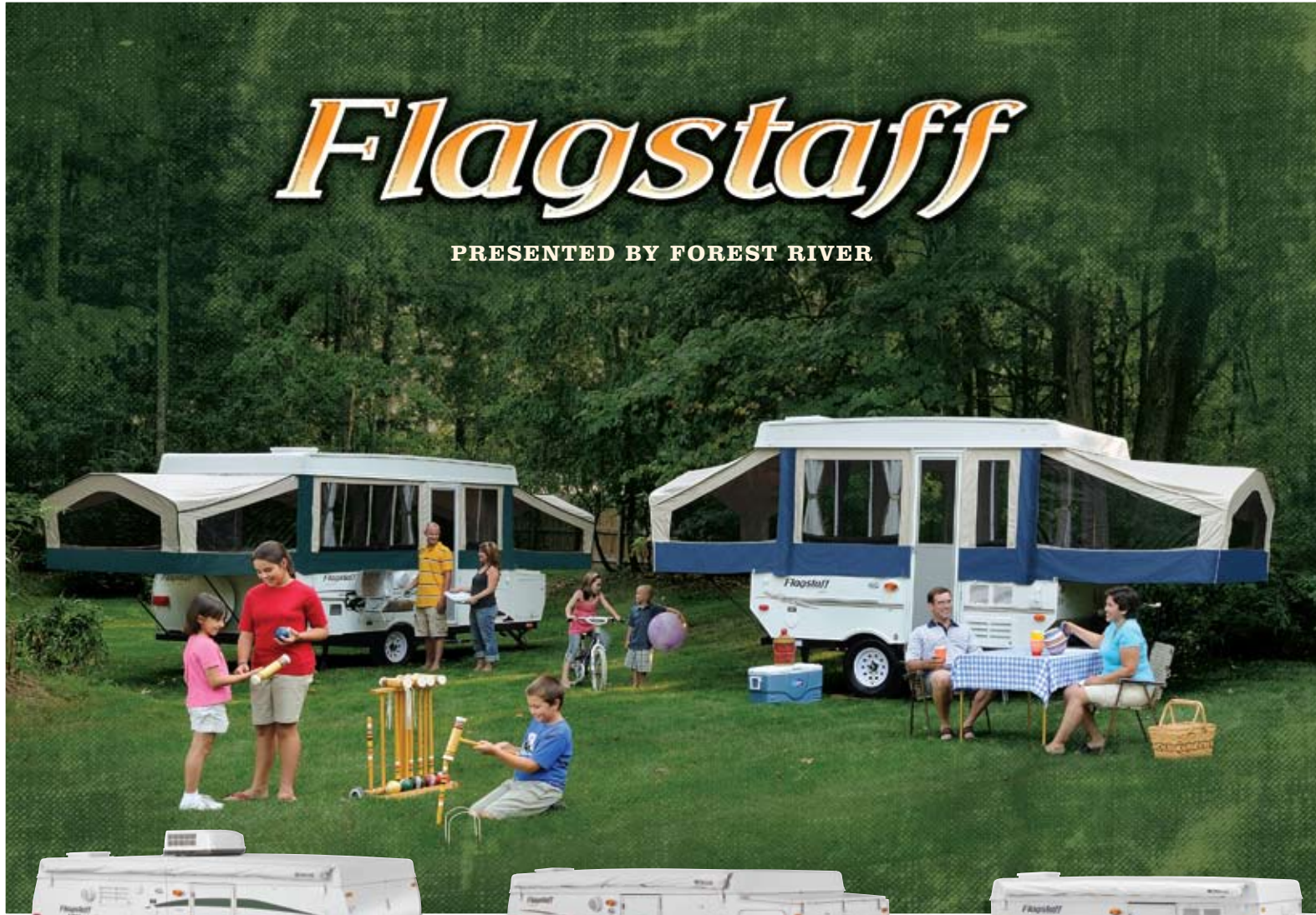
MAC/LTD

CLASSIC

HIGH WALL

# Flagstaff

PRESENTED BY FOREST RIVER





MAC/LTD

MODEL 207



Flagstaff takes pride in packing the most value possible into our MAC / LTD series. While coming standard with many features, it also gives you the flexibility to incorporate as many options as you choose to fit your camping preferences. Make your investment go along way with the MAC / LTD camper.





# MAC/LTD SERIES

## FEATURES

- A. Exterior Electric Plug  
(Except 176LTD)
- B. Metal Drawer Guides
- C. Under Floor 20 Gallon  
Water Tank  
(STD. Except LTD.)
- D. One-Piece Door  
(STD. Except LTD.)
- E. Outside Grill With  
Work Table  
(STD. on all Except LTD)
- F. Spare Tire (STD. With  
Travel Package)
- G. Marine Grade Plywood  
Bed Ends
- H. Heated Mattress (OPT.)



**A**



**B**



**C**



**D**



**E**



**F**



**G**



**H**



**CLASSIC**

**MODEL 625D**



The 625D Classic has many new features to enhance your camping experience. The swing-down galley and standard power lift make the Classic a breeze to set-up. The expansive seating throughout the camper gives everyone plenty of room to sit and enjoy themselves.





# CLASSIC SERIES

## FEATURES

- A. Outside Shower (STD. on Classics and HW)
- B. Hanging Shirt Bar (STD. on Classics and HW)
- C. Outside Speaker (STD. Classic, HW)
- D. Porta-Potty (STD. in Selected Models)
- E. Bunk Light & Fan (STD. Classic, HW)
- F. Swing Down Galley (Most Models)
- G. Sliding Storage Trunk (Some Models)
- H. Crank Down Stabilizer Jack With Sand Pad
- I. Stereo With CD Player (STD. Classic, HW)



**A**



**B**



**C**



**D**



**E**



**F**



**G**



**H**



**I**



**HIGHWALL**

**MODEL HW27SC**



Cream colored cabinetry, stainless steel finishes and beautiful wood-look flooring puts this camper in a class of its own. The Flagstaff High Wall Campers are perfect for those families who want the luxurious features of a travel trailer in a much lighter towable option. It's your vacation. Go in style.





# HIGH WALL SERIES

A. Beautiful hardwall shower  
With a residential-style flush  
toilet complete With a 12-gal-  
lon black water holding tank.

B. Fantastic Fan (Opt.)

C. Power Lift With Manual  
Override (Std. Classic, HW)

D. Water Filter (Std. w/  
Hot Water Package)

Right: No more waiting  
in line for the showers.  
Take a morning shower  
in privacy Without leaving  
your camper while breakfast  
is started. Our high wall  
models include a three burner  
range, microwave, stereo,  
a larger kitchen sink and  
shower which brings the finer  
amenities to tent camping.



**A**



**B**



**C**



**D**





Cape Butte

Columbus Point

Yuma Point

NATIONAL

6740 X 20

3018

4526

5429

3400

4500

5600

6840 X

5000

6600

X 6570

6000

6400

4200

6600

6600

TRAIL

TRAIL

4000

3400

FOOT

FOOT

TRAIL

Rest

14

3

11

2

1

15

5

6

12

13

8

9

4



# Flagstaff

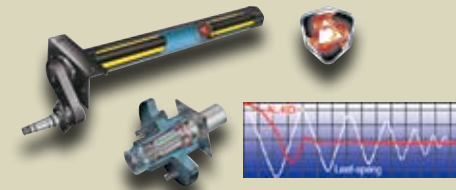
## CONSTRUCTION

- 1) Three Stage Double Arm Lifter Posts
- 2) Fiberglass Vacuum Bonded Radius Roof w/ No Center Seam
- 3) Five-Piece Tenting With Breathable Bed Ends
- 4) E-Z Crank Down Stabilizer Jacks w/ Sand Pads
- 5) Full Perimeter Aluminum Bed Frames
- 6) Plywood Bunk Ends
- 7) Seven-Way Pigtail Wiring
- 8) Under Floor 20 Gallon Fresh Water Tank (Ltds 10 Gallon Above Floor)
- 9) E-Coated Tubular Steel Frame
- 10) Powder Coated Rafter Poles and Bed Bows
- 11) Air Conditioner Reinforcing Laminated Into Roof
- 12) 13" Radial Tires on 12' Models (12" Radial Tires on 8' & 10' Models)
- 13) Easy Lube Axles
- 14) Breatheble Canvas Bed End Material
- 15) One-Piece Door (Except LTDs)

### ALKO® AXLES AND EASY LUBE HUBS

AL-KO Axles offer many advantages over conventional axles:

- Fully independent wheel suspension.
- Lower trailer center of gravity for improved stability.
- No metal to metal contact and no springs, shackles, hangers, or U-bolts to break or wear out.



The UltraLube™ Hubs allow you to repack bearings quickly and easily Without disassembly. Note: Torsion Axles on Classics and HW only. Easy-Lube Hubs on all units except LTDs.



## POPULAR OPTIONS



**A**



**B**



**C**



**D**



**E**

A. Screen Room With Flaps (Opt.) B. Hanging Wardrobe (Opt.) C. Hanging Pantry (Opt.) D. Power Lift (Opt. on LTD., MAC) E. Bike Rack (Opt.)



# HIGH WALL STANDARDS & OPTIONS

## STANDARD FEATURES

- Double Pan Sink With High Rise Faucet
- 14" Tires With Aluminum Rims
- 3500 LBS Torsion Axles by AL-KO
- Easy-Lube Axles
- New Exterior Graphics
- Cream Interior With "Wood Look" Linoleum
- AM/FM Stereo With CD player and Outside Speaker
- TV Outlet With Cable and Satellite Hook Up
- Three Burner Stove With Oven
- Microwave

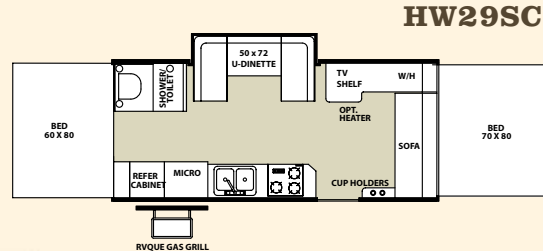
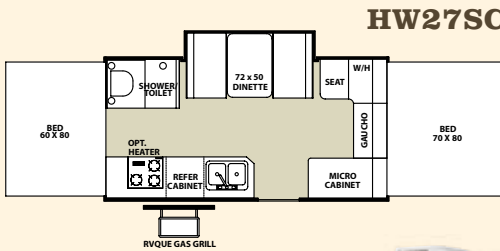
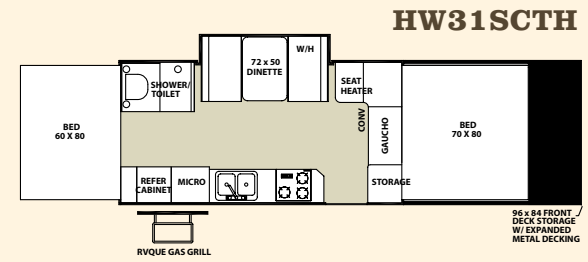
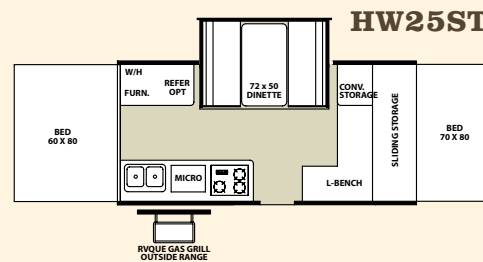
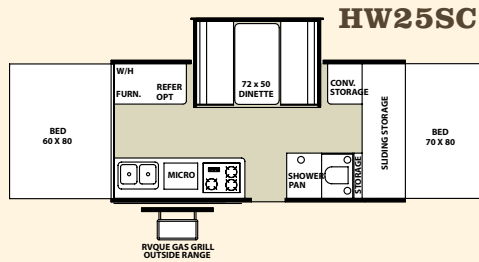
- Hot Water Package (Incl. Water Filter, Outside Shower, DSI Six Gallon Hot Water Heater)
- Electric Water Pump
- Water Purifier
- Two-20 lb. Gas Bottles
- Diamond Plated Metal End Caps
- Stainless Steel Appliances
- Six Gallon Gray Water Holding Tank
- Bunk Light With Fan
- One-Piece Screen Door
- Electric Brakes
- Battery Box and Wiring Kit

- 12v Safety Switch
- Power Lift System
- Awning
- Black Water Hose Storage
- Interior Floor Lights

## OPTIONAL FEATURES

- 13,500 BTU Air Conditioner
- Create-a-Breeze Three Speed Fantastic Fan
- Heated Innerspring Mattresses
- 17,000 BTU Forced Air Furnace w/

- Electric Ignition
- Screen Room With Flaps
- Convenience Package (Incl. Lined Privacy Curtain, Roof Valances, Patio Light, 110 Exterior Outlet)
- Travel Package (Incl. Spare Tire, Tire Bracket, Tire Cover, Step)
- Power Jack
- Tire Pressure Monitoring System
- Extra Large Three-Way 4.0 cu. ft. Refrigerator



MODEL	HW25SC	HW25ST	HW27SC	HW29SC	HW316SCTH
G.V.W.R.	3873	3806	3766	4701	7404
Base/Dry Unit Weight	2910	2831	2876	3221	3676
Base/Dry Hitch Weight	373	306	266	301	404
Base/Dry Axle Weight	2537	2525	2610	2920	3272
Cargo Capacity	963	937	852	1217	2317
Box Size	12'	12'	14'	16'	14'
Trailer Size (Closed - w/ Hitch)	18' 6"	18' 6"	19' 4"	21' 4"	28' 4"
Height (Closed)	68"	68"	68"	68"	68"
Trailer Length (Open)	22' 6"	22' 6"	24' 9"	26' 9"	33' 9"

Model number of any particular unit does not necessarily reflect the overall length of the unit itself. Dry weight are estimates.



# MAC/LTD SERIES STANDARDS & OPTIONS

## MAC/LTD STANDARD FEATURES

- Residential Kitchen Faucet w/ Electric Water Pump
- Soft Quilted-Top Bed Mattresses (4" High Density Foam)
- Outside Gas Grill (Optional on LTDs)
- Water-Pur Filtration System w/ all Shower Models
- Permanently Mounted 3 Burner Indoor Range w/ Range Cover (except LTDs)
- Converter w/ Built in Battery Charger
- Electric Brakes (12' models)
- Tinted Vinyl Windows
- Exterior Work Table (except LTDs)
- LP Leak Detector
- Automatic Safety Switch to Turn Off 12 Volt Current When Roof is Closed
- Large Built-In Icebox
- Drawer Guides
- One Piece Screen Door (Except LTDs)
- Port-a-Potty in 206ST Model
- A&E Awning
- Battery Box (Except LTDs)

## MAC/LTD CONSTRUCTION FEATURES

- Three Stage Double Arm Lifter Posts
- Fiberglass Vacuum Bonded Radius Roof w/ No Center Seam
- Five-Piece Vinolon Supreme Tenting
- E-Z Crank Down Stabilizer Jacks w/ Sand Pads
- Full Perimeter Aluminum Bed Frames
- Plywood Bunk Ends
- Seven-Way Pigtail Wiring

- Under Floor 20 Gallon Fresh Water Tank (LTDs 10 Gallon Above Floor)
- Automotive E-Coated Tubular Steel Frame
- One-Piece Undercoated Structurewood Floor
- Powder Coated Rafter Poles and Bed Bows
- Steel Air Conditioner Reinforcing Laminated Into Roof
- 13" Radial Tires on 12' Models (12" Radial Tires on 8' & 10' Models)
- Leaf-Spring Axle
- Main Door Operational in Closed Position
- 2,000 lb. Tongue Jack w/ Swivel Wheel
- Easy Lube Axles (Except LTDs)
- Seamless, High Density Polyethylene Wheel Wells
- Swing Level Galley With Storage

## MAC POPULAR EXTRAS

- Create-A-Breeze Three Speed Fantastic Fan
- Thermostatically Controlled Heated Bed Mattresses
- 17,000 BTU Forced Air Furnace w/ Electric Ignition
- Large 1.9 Cubic Ft. Refrigerator
- Screen Room With Flaps
- Convenience Pkg. (Incl. Lined Privacy Curtains, Roof Valances, Patio Light, 110 Exterior Outlet)
- Travel Pkg. (Incl. Spare Tire, Tire Bracket, Tire Cover, Step)
- Shower/Cassette Option (Model 228, 228BH, 228D Incl. Water Filtration System, Six Gallon Hot Water Heater, Demand Water Pump, and Cassette Toilet)
- Overhead Kitchen Pantry
- Power Lift System

- Bike Rack
- Air Conditioner Wiring Kit
- Electric Brakes (Standard on 12' Models)
- Dual 20 Lb. LP Bottles With Cover
- Tire Pressure Monitoring System
- Hot Water Package (227, 228, 228BH)

## LTD STANDARD FEATURES

- Spare Tire
- Awning
- Roof Vent
- Privacy Curtains
- Rear Crank Down Stabilizer Jacks w/ Sand Pads
- Outside Recept. (206 LTD only)
- Patio Light (206 LTD only)
- Step

## LTD POPULAR EXTRAS

- Thermostatically Controlled Heated Bed Mattresses
- Large 1.9 Cubic Ft. Refrigerator
- 17,000 BTU Forced Air Furnace w/ Electronic Ignition
- Add-A-Room With Flaps
- Electric Brakes
- Outside Gas Grill
- Battery Box
- Power Lift

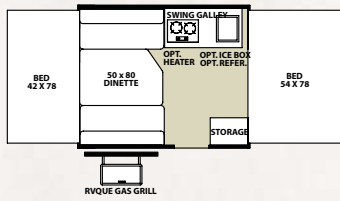
MODEL	176ED	206ST	206BH	205	207	208	227	228	228BH	228D	245D	176LTD	206LTD	BR19TH	BR23SC	BR28TSC	BR29TSC
GVWR	2233	2838	2816	2605	2520	2512	2877	2971	3081	3059	2988	2049	2274	3723	3770	5327	5429
Base/Dry Unit Weight	1448	1753	1731	1669	1635	1627	1892	1986	2021	2158	2278	1347	1493	2161	2545	2991	3093
Base/Dry Hitch Weight	192	222	234	238	237	268	274	327	331	309	238	175	174	223	270	190	301
Base/Dry Axle Weight	1256	1531	1497	1431	1398	1359	1618	1659	1690	1849	2040	1172	1319	1938	2275	2801	2792
Cargo Capacity	766	1066	1066	917	866	866	966	966	1041	882	691	683	762	1543	1206	2317	2317
Box Size	8'	10'	10'	10'	10'	10'	12'	12'	12'	12'	14'	8'	10'	10'	12'	12'	12'
Trailer Size (Closed - w/ Hitch)	12'	15' 11"	17' 2"	14'	14'	14'	15' 11"	15' 11"	18' 8"	15' 11"	17' 11"	12'	14'	19' 3z"	22' 1'	26' 3"	26' 3"
Height (Closed)	57"	57"	57"	57"	57"	57"	57"	57"	57"	57"	57"	57"	57"	62.5"	62.5"	62.5"	62.5"
Trailer Length (Open)	17'	20' 2"	20' 2"	20' 2"	20' 2"	20' 2"	22' 6"	22' 6"	22' 6"	22' 6"	24' 9"	17'	20' 2"	24'	27'	30' 3"	30' 3"

Model number of any particular unit does not necessarily reflect the overall length of the unit itself. Dry weight are estimates.

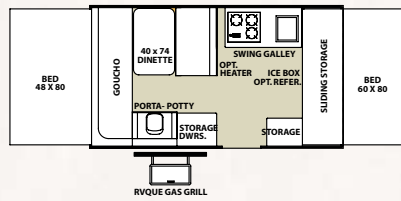


# MAC/LTD SERIES SERIES FLOORPLANS

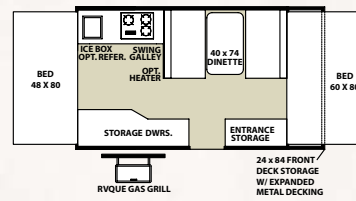
**176ED**



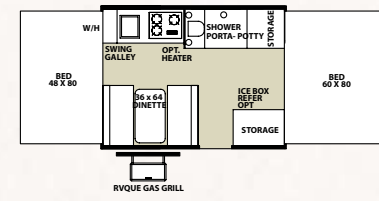
**206ST**



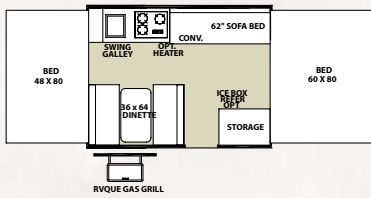
**206BH**



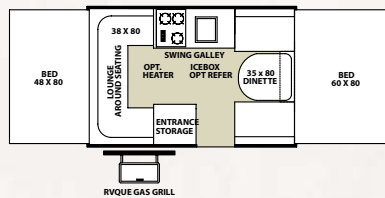
**205**



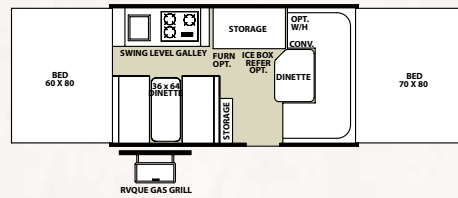
**207**



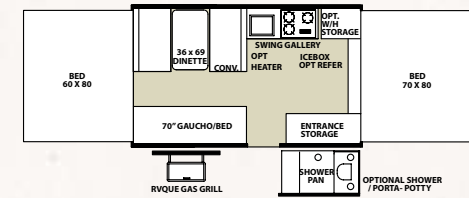
**208**



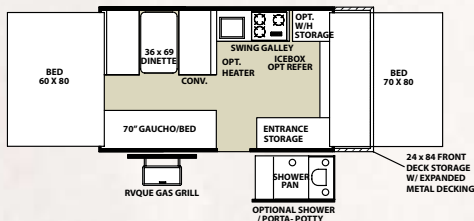
**227**



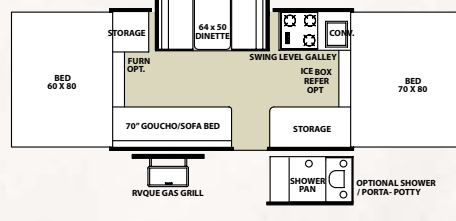
**228**



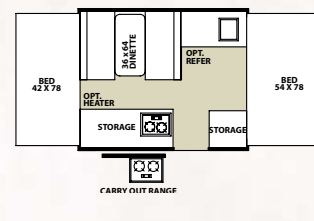
**228BH**



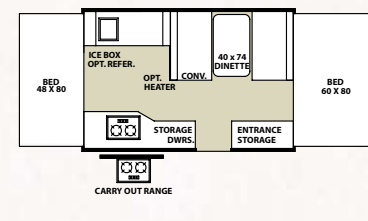
**228D**



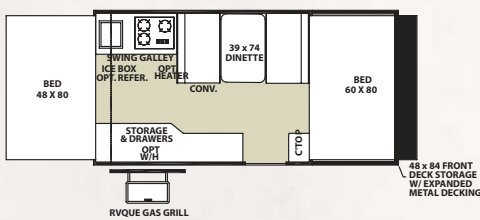
**176LTD**



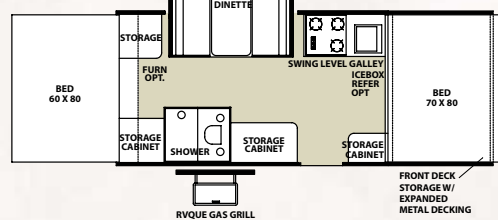
**206LTD**



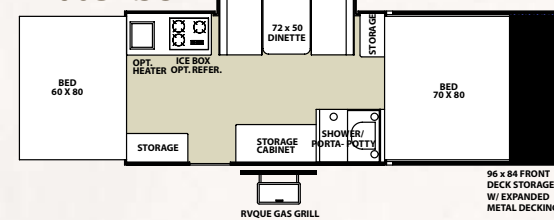
**BR19TH**



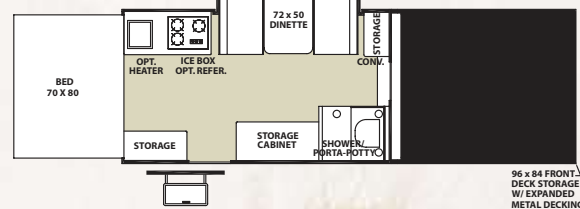
**BR23SC**



**BR28TSC**



**BR29TSC**





# CLASSIC SERIES STANDARDS & OPTIONS

## CLASSIC STANDARD FEATURES

- Power Lift System
- Swing Level Galley With Storage
- Residential Style Kitchen Faucet w/ Electric Water Pump
- Larger Deeper Sinks
- Soft Quilted Top Innerspring Mattresses
- Outdoor Gas Grill w/ Worktable
- Sliding Storage Tray on All Front Trunk Models (Except 620ST)
- Water-Pur Filtration System
- E-Z Crank-down Stabilizer Jacks w/ Sand Pads
- Electric Brakes (12' Models)
- Residential Style Raised Panel Doors
- Three Double Ceiling Lights w/ Jacks For Accessories
- Bunk Light w/ Fan
- Permanently Mounted Three-Burner Indoor Range w/ Stove Cover
- Free Standing Table – High Pressure Laminate
- Comfortable Family Style Dinette w/ 4" Reversible Cushions
- Large Clothes Bar
- LP Leak Detector
- Metal Drawer Guides
- Port-a-Potty in 425D and 620 Models
- A&E Free Standing Awning

- Hot Water Pkg. – Incl. Water Filter, Outside Shower, Six Gallon Hot Water Heater, Demand Water Pump
- AM/FM Stereo w/CD Player
- Outside Speaker

## CLASSIC CONSTRUCTION FEATURES

- Smooth Fiberglass Vacuum Bonded Exterior
- Three-Stage Double Arm Lifter Posts
- Fiberglass Vacuum Bonded Radius Roof w/ No Center Seam
- One-Piece Screen Door
- Five-Piece Sectionalized Vinolon Supreme Tenting With Breathable Bunk Ends
- Under Floor 20 Gallon Fresh Water Tank
- Powder Coated Tubular Steel Frame
- One Piece Undercoated Stucturewood Floor
- 13" Radial Tires (12" Models)
- Seven-Way Pigtail Plug
- Tent Permanently Attached on Bunk Ends and Slide Out
- Full Perimeter Aluminum Bed Frames
- Tinted Vinyl Windows
- Powder Coated Rafter Poles and Bed Bows
- Steel Air Conditioner Vent Reinforcing Laminated Into Roof
- Easy Lube Axles
- Two Tone Fabric Interior

- Plywood Bunk Ends
- Independent Torsion Axles
- Lower Door Operational in Closed Position
- 2000 lb. Tongue Jack w/ Swivel Wheel
- Seamless, High Density Polyethylene Wells
- Battery Box and Wiring Kit
- 20lb. LP Bottle

## CLASSIC POPULAR EXTRAS

- Create-A Breeze Three Speed Fantastic Fan
- Thermostatically Controlled Heated Mattresses
- 17,000 BTU Forced Air Furnace w/ Electric ignition
- Extra-Large 2.5 Cubic Ft. Refrigerator
- A&E Screen Room With Flaps
- Convenience Pkg. (Incl. Lined Privacy Curtains, Roof Valances, Patio Light, 110 Exterior Outlet)
- Travel Pkg. (Incl. Spare Tire, Tire Bracket, Tire Cover, Step)
- Overhead Kitchen Pantry
- Hanging Wardrobe
- Bike Rack
- Air Conditioning Wiring Kit
- 13" Radial Tires (10' models)
- Dual 20 lb. LP Bottles
- Power Jack
- Tire Pressure Monitoring System

## FLAGSTAFF CLASSIC SERIES SPECIFICATIONS

MODEL	620ST	720	823	823D	425D	625D
GVWR	2953	2732	3258	3318	3263	3252
Base/Dry Unit Weight	1917	1796	2291	2445	2446	2473
Base/Dry Hitch Weight	247	221	298	358	303	292
Base/Dry Axle Weight	1670	1575	1993	2087	2143	2181
Cargo Capacity	1017	917	948	854	798	760
Box Size	10'	10'	12'	12'	12'	12'
Trailer size (Closed - w/ Hitch)	15' 5"	14'	15' 11"	17' 11"	17' 11"	17' 11"
Height (Closed)	57"	57"	57"	61"	61"	61"
Trailer Length (Open)	20' 2"	20' 2"	20' 8"	23' 6"	23' 6"	23' 6"

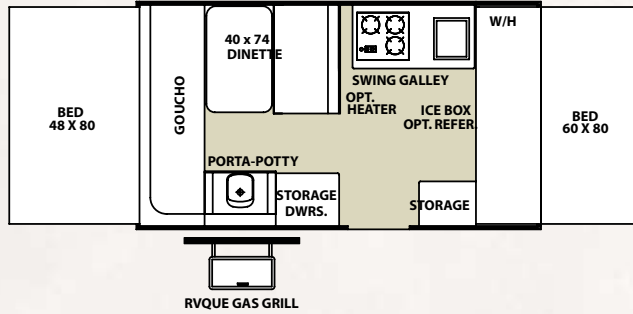
Model number of any particular unit does not necessarily reflect the overall length of the unit itself. Dry weight are estimates.



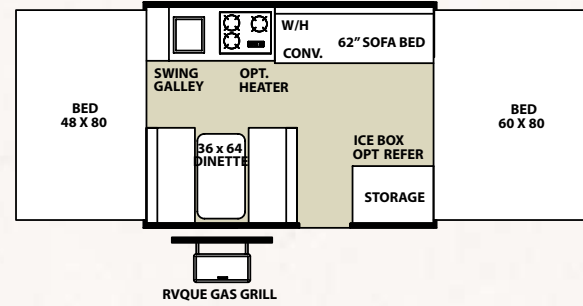


# CLASSIC SERIES SERIES FLOORPLANS

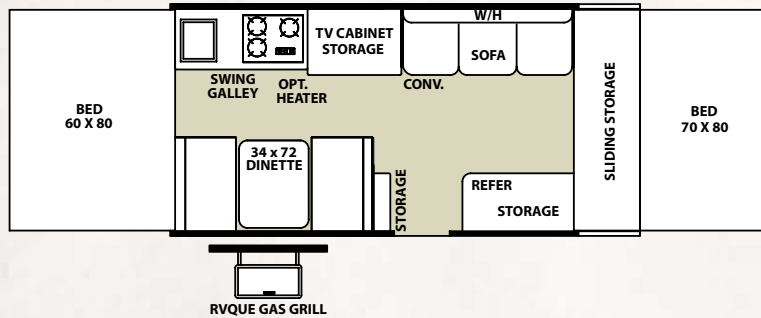
**620ST**



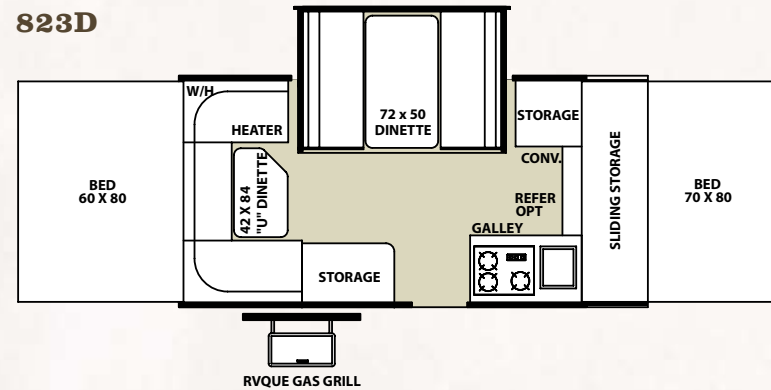
**720**



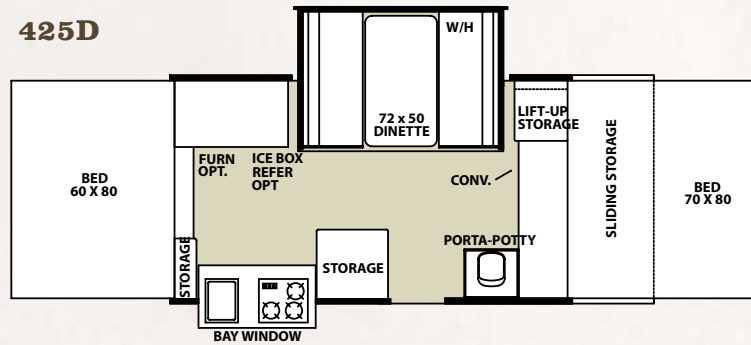
**823**



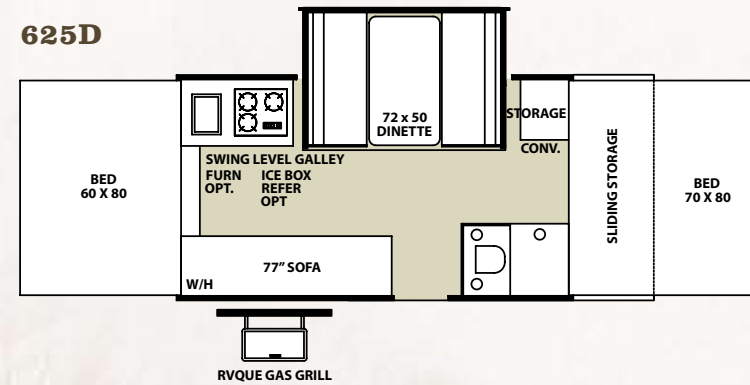
**823D**



**425D**



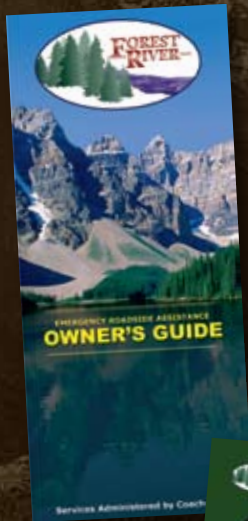
**625D**





## PEACE OF MIND.

Forest River has yet another exclusive feature to offer: One year of free roadside assistance will be given to every 2009 Flagstaff customer. This is just one more way to say "Thank you" and to ensure an enjoyable traveling experience.



FOREST RIVER'S HALLMARK OF EXCELLENCE:

## PRE-DELIVERY INSPECTION FACILITIES



### THAT'S 20,000 SQUARE FEET OF QUALITY ASSURANCE. THE BARE ESSENTIALS FOR A PREMIUM PRODUCT.

Brought online in 2005, Forest River is proud of its state-of-the-art test facility. This beautiful building blends many of the old tried and true methods of testing our diverse types of RVs With new innovative ways of solving quality issues. Being centrally located to most Forest River manufacturing facilities, this 20,000 square foot PDI (Pre-delivery Inspection) test building gives immediate daily feedback to individual managers. This assures the production facilities that nothing has slipped by the plant's quality assurance personnel and the units are "green" and ready to ship.

### YOUR FLAGSTAFF DEALER

For details on Flagstaff's complete warranty program, see your Flagstaff dealer. When it comes to backing products With the same quality and commitment it does when it begins the manufacturing process, the only name you have to remember when you're looking for a recreational vehicle is Flagstaff. Flagstaff offers the following additional limited warranties to the original purchasers. Consult written warranty for details.

1. Five-year roof warranty,
  2. Twenty-five-year floor warranty,
  3. Five-year frame warranty,
  4. Five-year tent warranty,
  5. Five-year warranty on torsion axle suspension,
  6. Limited life-time warranty of lifter system,
  7. One-year bumper to bumper.
- Ask your dealer about the available lifetime structural warranty.



All specifications contained herein are based on the latest product information at time of printing. Forest River reserves the right to make changes in colors, materials, equipment and specifications at any time Without notice and assumes no responsibility for any errors in this brochure.